



## NEW THINKING. NEW POSSIBILITIES.

People's expectation toward individual mobility requires more than just a convenient means of transportation. The old understanding of cars has become outdated. A car represents individuals' lifestyles, and it became an integral part of their lives. At the same time, the automobile industry has experienced seismic change. Hyundai Motor Company has grown rapidly to become one of the largest automakers, backed by world class production capability and superior quality. We have now reached a point where we need a qualitative approach to bring bigger ideas and relevant solutions to our customers.

This is an opportunity to move forward and we have developed a new brand slogan that encapsulates our willingness to take a big leap. Led by our new slogan and the new thinking underlying it, we will become a company that keeps challenging itself to unlock new possibilities for people and the planet.

**Hyundai Motor Company**  
www.hyundai.com

GEN. RHD 1211 ENG. ID-KM

Copyright © 2012 Hyundai Motor Company. All Rights Reserved.

www.facebook.com/hyundaiworldwide   [www.youtube.com/hyundaiworldwide](http://www.youtube.com/hyundaiworldwide)



**HYUNDAI** | NEW THINKING.  
NEW POSSIBILITIES.

# i30





---

**QUITE SIMPLY, UNIQUE.**

When things become more and more alike, individuality becomes more and more important. To stand out you need to take a different standpoint, go against convention and be prepared to surprise. Only by doing so do you create something unique. Welcome to the new Hyundai i30. A car that goes in a different direction.

UN Style means non-conformity, style gets you noticed. It's a matter of confidence and simply knowing what looks right.

# CONVENTIONAL LOOK



---

## DYNAMIC DESIGN THROUGH FLOWING LINES.

Fluidic sculpture is the design philosophy that underpins every Hyundai. The i30 is another step forward for this progressive concept, as just one glance at the sporty, dynamic exterior bears out. Energetic belt line mouldings emphasise the natural flow from front to back, with the car conveying an impression of movement even while projecting a voluminous stance.

Aerodynamics are second to none, with low overall height not only contributing to the style, but also to some of the best fuel economy on the market.





**MOVING AWAY FROM THE ACCEPTED.**

The new i30's striking hexagonal grille tells you straight away this is a Hyundai. While the body shape departs from the traditional hatchback design, the stylishly curving tailgate lifts to reveal a roomy, versatile trunk that more than takes care of your luggage needs.



**STYLE SHIFTS UP A GEAR.**

Because style is all about turning heads, this is a car with eye-catching features throughout. Up front, lights provide a touch of class while enhancing your visibility. At the rear, a rakishly designed spoiler, incorporating an integral rear brake light, adds to the refinement.



The rear combination lamps and bumpers blend seamlessly into the bodywork to form an organic whole. Even details such as tyre clearance have been considered. The gap between rubber and wheel arch has been reduced to a minimum, adding to the poise and sporting appearance while enhancing aerodynamics and lessening wind noise.





**INGENIOUS DESIGN, INSIDE AND OUT.**

With the largest boot space in its class, the i30 is as practically assured as it is aesthetically beautiful.

**UN** Driving made easy, driving made fun.  
Dynamic ride and handling bring  
a new dimension to your journeys.

# EXPECTED DRIVING



---

## SMOOTH, COMFORTABLE AND PRECISE.

Out on the road, the i30 is one of a kind. With control, responsiveness and agility all given top priority, you'll find yourself enjoying the pure sensation of driving all over again. The car delivers a smooth, sturdy ride, with exceptional shock absorption and high-speed stability. Flex Steer offers three different levels of steering response - Normal, Sport and Comfort, and with the best noise dampening results in its class, you're free to enjoy the road ahead with no distractions.





**POWER AND PERFORMANCE. NOT THE ONLY THINGS SETTING US APART.**

For Hyundai, it's not enough that our engines deliver power, torque and response. We constantly search for the extras that provide unsurpassed performance. With the new i30 that means a range of innovative Blue Drive technologies to improve fuel consumption and increase efficiency, and CO<sub>2</sub> emissions reduced to just 97g/km.



**NU 1.8 MPI ENGINE**  
Delivering a maximum 150 ps at 6,500 rpm, this powerful engine's performance is maximised through dual continuous variable valve timing.



**FLEX STEER**

Flex Steer lets you choose from three different levels of steering assistance - Comfort, Normal and Sport - so that you can tune the handling of the i30 to the feedback from the road and the driving conditions. Each and every journey becomes a pleasure.

**AUTOMATIC TRANSMISSION**

The 6-speed automatic gearbox, featuring a new shift pattern with sports mode, blends dynamic performance with outstanding fuel economy.

**MANUAL TRANSMISSION**

The 6-speed manual transmission, as well as being durable and offering improved fuel economy, features a redesigned reverse gear release button for easy operation.



**GAMMA 1.6 MPI ENGINE**  
Lightweight for greater fuel economy, this engine delivers a maximum 130 ps at 6,300 rpm, while its rigidity means reduced noise and vibrations.



**U2 1.6 VGT ENGINE**  
This impressive diesel engine delivers a maximum 128 ps at 4,000 rpm, with optimum fuel efficiency, minimum noise and low emissions.



---

**DISCOVER IT FOR YOURSELF.**

Nothing beats the open road. Travel it with the new i30 and your journeys come alive. Effortless gear changes, intuitive control, a driving experience out on its own.



**TRACTION CONTROL SYSTEM (TCS)**  
Drivers are better prepared for high-risk driving conditions with this slippery road warning function.

**7 AIRBAG SYSTEM**  
A total of 7 airbags provide protection against collision injuries.

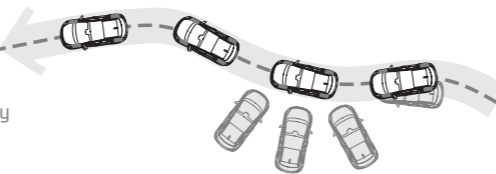
**SIDE UPPER BODY**  
Center pillar/roof side is hot stamped, section enlarged, and roof center pillar applied.

**INNER QUARTER**  
Roof rear rail connects to the circular tailgate structure with another structure connecting the quarter inner and floor.

## SAFETY FIRST AND LAST..

Peace of mind is central to a modern car. Our designers have ensured a comprehensive range of passive and active safety features are built into the i30, a fact recognised by Euro NCAP when they awarded it a maximum 5 stars – the best safety performance in its class.

**ELECTRONIC STABILITY CONTROL (ESC)**  
If you have to brake or swerve suddenly, the danger is you lose control. ESC prevents this by applying brake pressure independently to each wheel, preventing you from sliding.



**REAR PARKING ASSIST SYSTEM**  
A Rear Parking Assist System sounds a warning if you get too close to other vehicles and obstacles when reversing into a space.

**SLIDING-TYPE BACK WARNING CAMERA**  
A camera at the rear relays images to a screen on the rear-view mirror, helping you when parking and eliminating blind spots when changing lanes.



**KNEE AIRBAG**  
The i30 features a knee airbag, protecting this vital area in the event of an impact.

**ELECTRIC PARKING BRAKE**  
Replacing the conventional handbrake, an electric parking brake is easy to use and safe.





**UN** Pleasing to the eye, pleasing to the touch.  
Qualities that make the interior  
of the i30 truly special.

# PRECEDENTED COMFORT



---

## A SPECIAL FEELING AWAITS.

Take a seat in the i30 and the comfort and space are such that you forget this is a compact car. Cabin room is more than you'll find in competitor cars, while comfortable seats – fully adjustable for the driver – provide firm, well-upholstered support.

The climate is kept cool and fresh whatever the outside temperature, thanks to dual zone air conditioning, rear air ventilation and a cluster ionizer. Meanwhile, a range of stylish colour and seat options are yours to choose from.



## WHERE CONTRAST MAKES FOR HARMONY.

The interior of the i30 is where the sculptural qualities of the car really come into play. A variety of textural surfaces contrast with one another, with controls and technological features playing off against the dashboard trim in a highly effective way.



### DRIVER POWER SEAT

With simple operation, the driver seat is adjustable in 8 ways, allowing you to find the perfect driving position.



### PANORAMIC SUNROOF

A panoramic sunroof opens up to let the sunshine and fresh air in. Perfect for summer days.

### CLUSTER IONIZER

A cluster ionizer purifies the air coming through the air conditioner and heater, keeping the atmosphere clean and odour-free.

### SUPERVISION CLUSTER

With white and blue illuminated graphics, the sporty supervision cluster displays all the attributes of modern, functional design.

### CUP HOLDER SLIDING COVER

An armrest between the front seats provides extra comfort, and slides back to reveal extra storage space.





## FOR INDIVIDUALS, A SUPREME INDIVIDUAL CAR.

Active lifestyles demand an active car, and so the i30 has all the space and practicality you could want. Not only does it have ample room in the boot, but you can fold the seats down in a moment, and in a variety of configurations.

### FLAT-FOLDING SEATS

The rear seats fold down completely to leave a completely flat surface. Perfect for everything from trips to the shops to weekend getaways.



### 60/40 FOLDING REAR SEATS

60/40 folding rear seats provide plenty of versatility when it comes to carrying your gear, while still leaving room for rear seat passengers.

### LUGGAGE TRAY

A luggage tray is located underneath the floor, so as not to intrude on the neatness and utility of the luggage area.

### LUGGAGE NET AND HOOK

A handy luggage net and hook stretches over your luggage to keep it in place.

### LUGGAGE POWER OUTLET

A 12 volt power outlet in the luggage area lets you charge your mobile phone and similar devices.





## A CAR ON YOUR WAVELENGTH.

Nowadays, we're more connected than ever. No surprise then that the i30's audio technology offers full external device compatibility, so that you're just a simple plug-in away from your favourite sounds. It's just one way in which the intuitive and responsive driver space is tuned to your enjoyment.

### SMART KEY

All that's needed to lock and unlock the i30 is a quick press of the button on the stylishly-shaped Smart key.



### TILT & TELESCOPIC STEERING WHEEL

A tilt and shift steering wheel lets you raise and lower the steering wheel so that you can find the most comfortable position.

### IN-DASH AUDIO SYSTEM

The in-dash audio system offers radio and CD in conjunction with a speaker system, for high quality sound.

### AUTO CRUISE CONTROL

A switch on the steering wheel lets you engage auto cruise control, for steady, economical motorway driving.

### USB AND AUX INPUT PORTS

MP3, \*iPod and other mobile storage devices and portable music players connect via ports on the centre console.



UNCOVER THE POSSIBILITIES.

Just when you thought there was nothing new to discover in motoring, along comes the new i30. Taking the best in style, performance and function and turning it into something truly distinctive, it's everything a car should be, unbound.



## THE SPECIFICATION UP CLOSE.

From HID headlamps to fog lamps and from a panoramic sunroof to a high-mounted stop-lamp, the i30 has your convenience and driving pleasure dialled in. At the same time, a range of stylish options lets you equip the car the way you want it, adding to the sense of individualism.



### A. HID headlamps

Optional HID (High Intensity Discharge) headlamps produce more luminosity than conventional halogen lamps. Because they deliver more light intensity for the same amount of energy used, they can be made smaller than traditional lamps, and therefore look dynamic and compact as part of a front light assembly. They also cast a longer beam, allowing you to pick out obstacles in the road sooner.

### B. Auto folding mirrors.

Our auto folding mirrors automatically fold away when the i30 is switched off. A puddle lamp that illuminates the door areas for safer entry and exit is also available.

### C. Welcome light door handles

Lights built into the door handles are the i30's way of welcoming you to the car.

### D. Fog lamps

Mounted low on the body to penetrate fog in the best way, optional fog lamps form an uninterrupted part of the lower bumper.

### E. Side repeaters and puddle lamps

While side repeaters are sleek, elegant and give you more visibility, puddle lamps light up when you approach the car, for a classy touch.

### F. Rear lamps

As well as forming an integral part of the flowing bodywork, the rear lamps produce bright, consistent light, for optimum safety.

### G. Panoramic sunroof

A twin-panel panoramic sunroof lets light flood into the interior. Sliding back easily, it's ideal on warm sunny days. A Retractable Panoramic roof slides across easily, while a wind deflector stops you getting blown around.



### A. High-mounted stop lamp

A high-mounted stop lamp integrated into the tailgate, with bright red LEDs, increases your visibility to traffic behind when you apply the brakes.

### B. Rear Wiper

The rear screen wiper clears a larger area and is automatically activated by selecting reverse gear if rain sensor is fitted.

### C. 15" steel wheels

Strongly built and strong on style, 15" steel wheels come as standard.

### D. 15" alloy wheels

Lightweight alloy 15" wheels feature an attractive five split-spoke design.

### E. 16" alloy wheels

16" alloy wheels increase the sporting character, while their light weight adds to the fuel economy of this already fuel-efficient car.

### F. 17" alloy wheels

17" alloy wheels are the ultimate in performance, sporting prowess and prestige. Come fitted with low-profile 225/45R17 radial tyres.

### G. Sliding-type back warning camera

Neatly hidden when not in use, a camera at the rear provides you with a view behind, showing you how much room you have when reversing, and making overtaking safer by eliminating blind spots.

## MAKING DRIVING COMPLETE.

Why take your hands from the wheel when you want to adjust the stereo? Why not have two different levels of air conditioning instead of just one? These are the sort of questions our designers and engineers have addressed with the i30. Now it's time for you to enjoy the results.



**A. Full leather cover with supervision cluster**  
A full leather cluster cover is an option that adds a dash of sporting discernment to the interior. As well as cylindrical speedometer and rev counter dials, edged in silver for that sporty look, the supervision features a colour TFT LCD that provides essential car status information.

**B. ECM with rear view display**  
An electro-chromic rear view mirror automatically dims the glare of headlights behind you, while its integrated screen displays images from the back warning camera.

**C. Steering wheel audio control**  
Use your left hand to control the audio system from the steering wheel.

**D. Bluetooth Handsfree**  
Bluetooth functionality lets users make hands-free phone calls and stream music wirelessly to listen to it over the car's stereo speakers.

**E. Conventional cluster**  
The 2-circle type cluster which further improved the luxurious appearance by white and blue light offers drivers various information through a hi-tech LCD.

**F. Engine start/stop button**  
A press of the start/stop button is all it takes to fire up the engine. Ultimate ease of use, with no key required.

**G. Rain sensor**  
A sensor on the windscreen detects raindrops and automatically activates the wipers, varying their speed depending on the quantity of rainfall.



**A. Dual zone full auto air conditioning**  
Allows the driver and front seat passenger to select separate air conditioning levels.

**B. Manual air conditioning**  
Manual air conditioning lets you set your preferred climate setting by hand.

**C. Chrome inside door handles**  
The inside door handles are finished in chrome, so they're both easy on the eye and cool to the touch.

**D. Rear air ventilation**  
Allows back seat passengers to easily control the amount of air flow they'd like.

**E. Front/rear cup holder**  
Refreshments on the move are important, so the i30 features cup holders at the front and back.

**F. Metal pedals**  
A real motorsport feature, metal pedals are available for both manual and automatic transmissions.

**G. Overhead console**  
A console positioned just above head height is the ideal place to keep your sunglasses.

**H. Cooling glove box**  
A cooling glove box keeps your drinks and snacks fresh.

## INTERIOR TRIMS



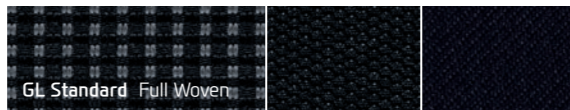
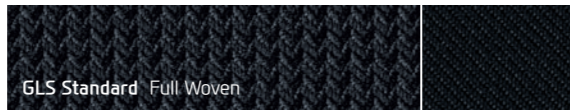
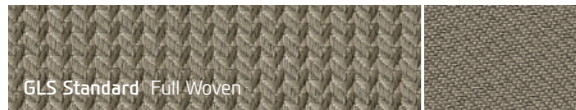
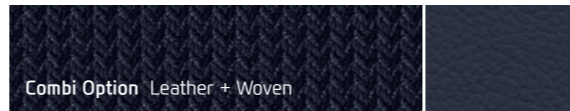
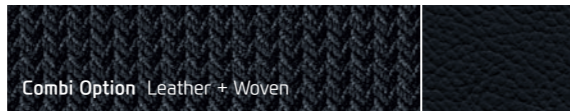
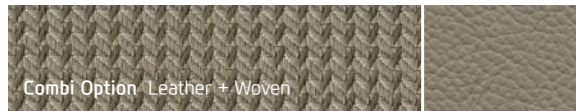
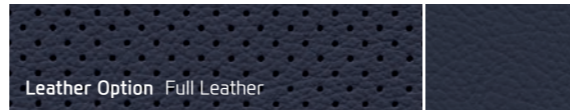
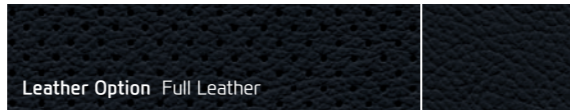
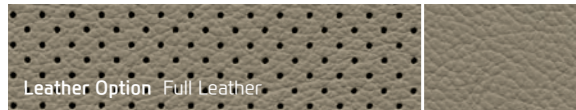
BEIGE+BLACK TWO TONE



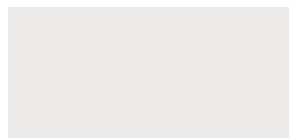
BLACK ONE TONE



BLUE COLOUR PACKAGE



## COLOUR



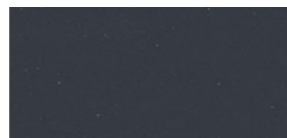
Creamy white YAC



Sleek silver P3S



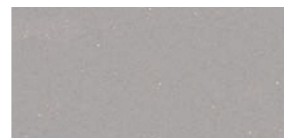
Hyper silver P5S



Black bean MB3



Phantom black PKA



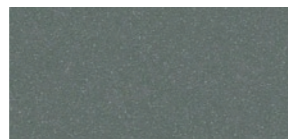
Mush room P3W



Tropic red TRP



Hazel brown W7G



Misty olive SK7



Clean blue P2U



Santorini blue S7U

## SPECIFICATIONS

Dimensions		General		
Overall length (mm)		4,300		
Overall width (mm)		1,780		
Overall height (mm)		1,480		
Wheel base (mm)		2,650		
Wheel tread (mm)	Front	15 inch Steel : 1,563 / 15 inch Alloy : 1,569 / 16 inch Alloy : 1,555 / 17 inch Alloy : 1,549		
	Rear	15 inch Steel : 1,576 / 15 inch Alloy : 1,582 / 16 inch Alloy : 1,568 / 17 inch Alloy : 1,562		
Head room (mm)	Front	1,018		
	Rear	963		
Leg room (mm)	Front	1,067		
	Rear	880		
Shoulder room (mm)	Front	1,420		
	Rear	1,395		
Engine		Gamma 1.6 MPI	ΠU 1.8 MPI	U2 1.6 VGT
Engine type		DOHC D-CVVT		
Displacement (cc)		1,591	1,797	1,582
Max. Power (ps / rpm)		130 / 6,300	150 / 6,500	128 / 4,000
Max. Torque (kg-m / rpm)		16.0 / 4,850	18.2 / 4,700	26.5 / 1,900~2,750
Suspension				
Suspension type	Front	McPherson strut type with coil spring		
	Rear	Torsion Beam Axle		
Tyre		195/65 R15, 205/55 R16, 225/45 R17		
Fuel tank (litre)		50		

- Some of the equipment illustrated or described in this catalogue may not be supplied as standard equipment and may be available at extra cost.
- Hyundai Motor Co. reserves the right to change specifications and equipment without prior notice.
- The colour plates shown may vary slightly from the actual colours due to the limitations of the printing process.
- Please consult your dealer for full information and availability on colours and trims.

## DIMENSIONS

unit : mm



1,549\*

\*Wheel tread



880

2,650

770

4,300



1,562\*

1,780

\*Wheel tread

- 15 inch steel wheel (F/R) 1,563 / 1,576
- 15 inch alloy wheel (F/R) 1,569 / 1,582
- 16 inch alloy wheel (F/R) 1,555 / 1,568
- 17 inch alloy wheel (F/R) 1,549 / 1,562